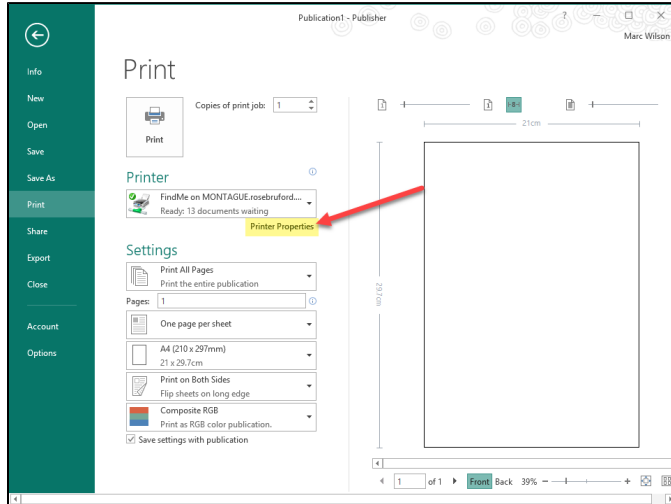


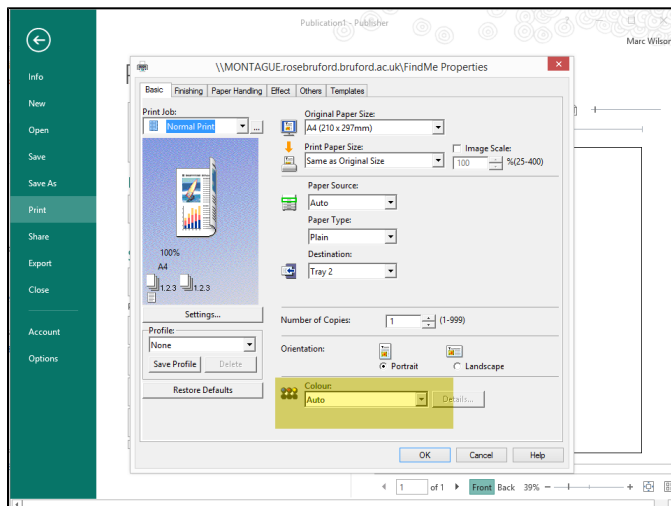
# Printing in colour - Publisher document

By default all college printing **defaults to greyscale** and to print in colour you need to change the print job properties on each document you print to colour if you want colour

Normally this is done by clicking on the **'Printer Properties'** link on the print page and then changing the colour mode but in Microsoft **Publisher** this does not work



When you click on **'Printer Properties'** the colour mode is always set to **'Auto'**



To change the publisher document between greyscale and colour you need to switch between **'Composite RGB'** (colour) and **'Composite Greyscale'** in the settings section on the print page as shown below

