

# Unit 4 QLx application using RDWeb

The college publishes the QLx (Agresso Students) application via two services - Citrix XenApp and Microsoft RDWeb

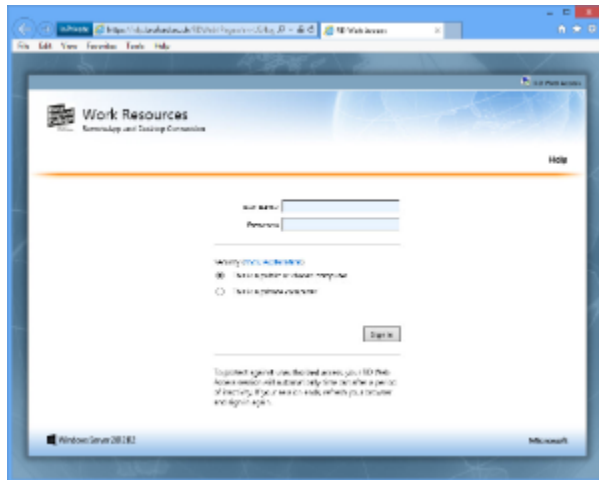
This document shows the steps involved in using RDWeb and assumes you have permission to access this QLx

You access RDWeb via Internet Explorer by going to the following URL : <https://rdp.bruford.ac.uk>

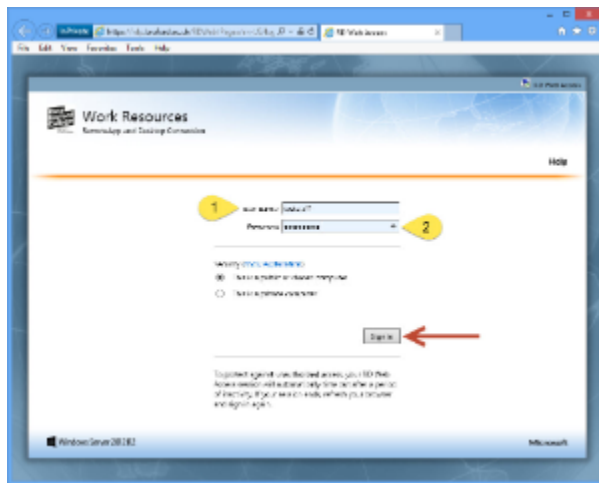


The service is currently only available on campus

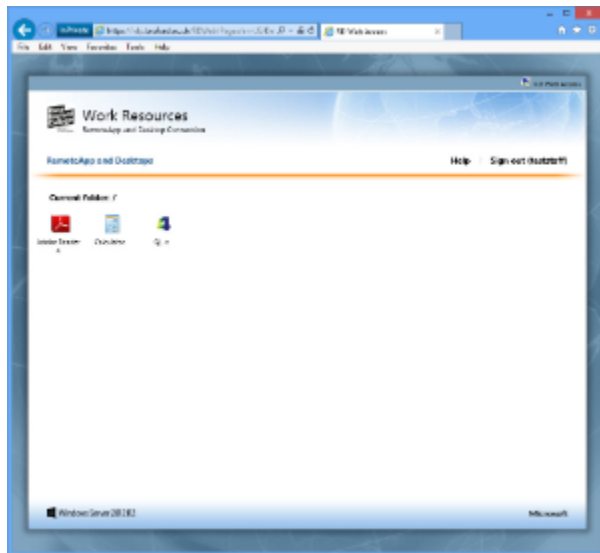
This will take you to a forms based login page as shown below



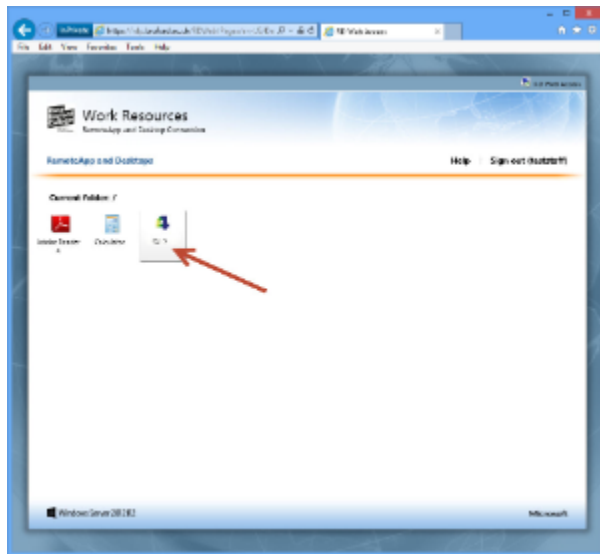
You now enter your college SSO username/password in the indicated boxes and click on Sign In



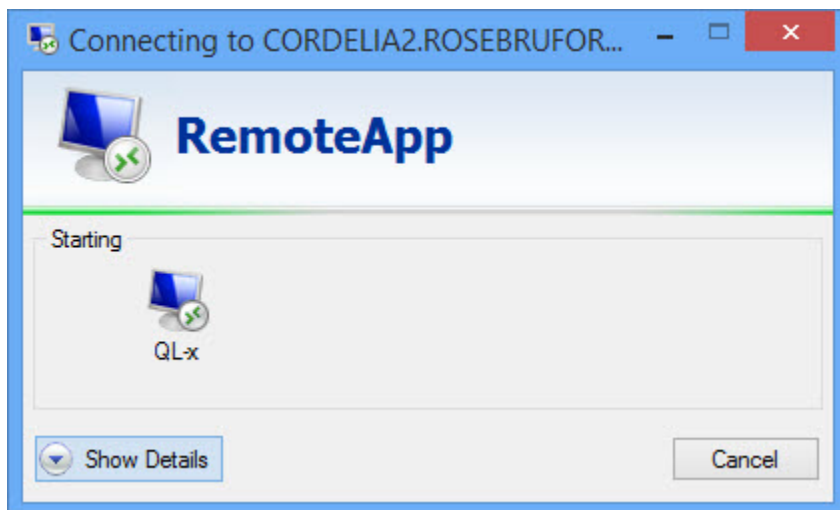
You will now see the applications available and if you have permission you should see the QLx application icon, as shown below



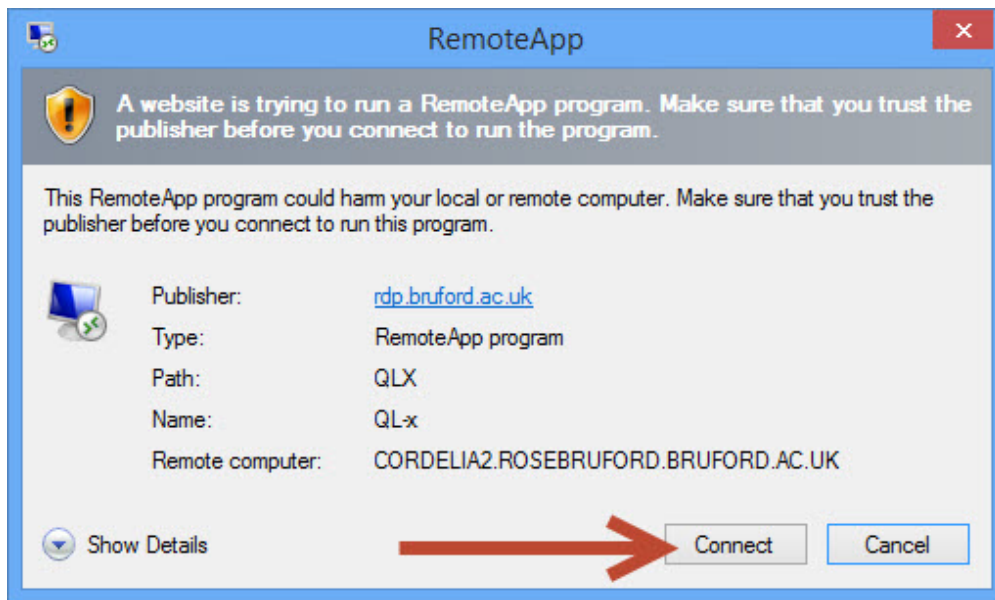
Click on the QLx icon



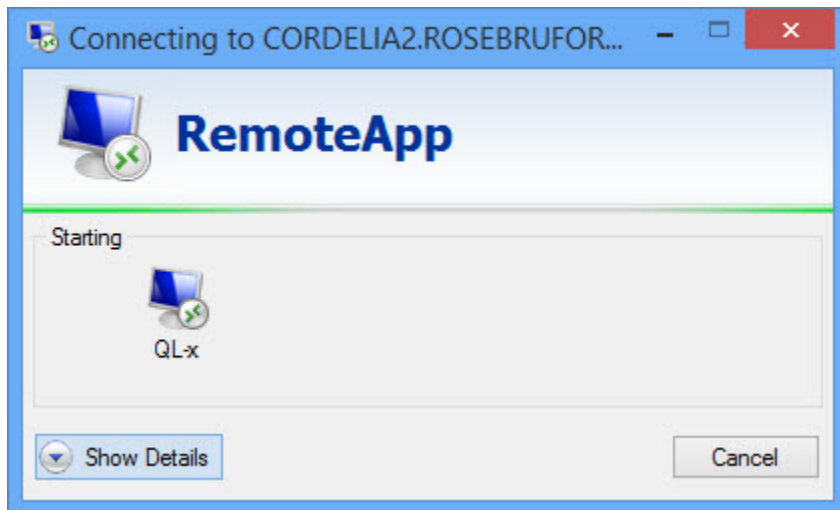
A RemoteApp starting box will appear, as shown below



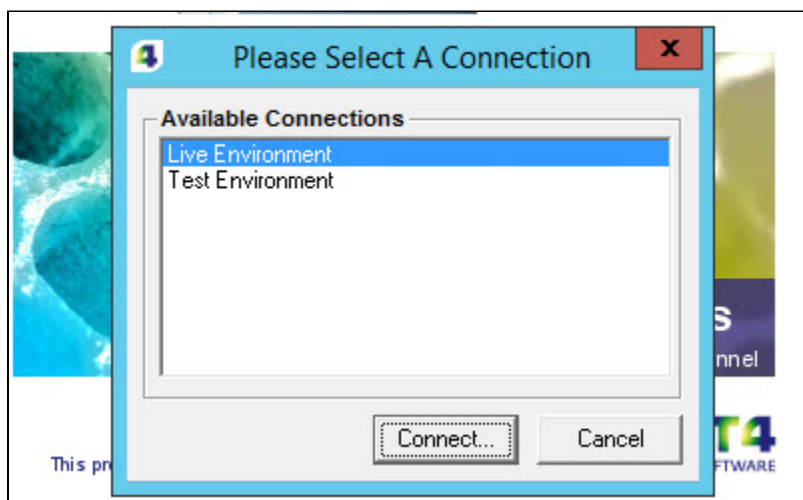
You may be asked if it is OK to connect on the computer you are using, if so just click on Connect if the box is the same as below



This will return you to the RemoteApp box



And after a few seconds the QLx environment select box will appear



Select the environment you want and click on the Connect button and you will be SSO into the QLx application

*Use of the QLx application is beyond the scope of this document*

To end your session just close the QLx application